

# MONTHLY MEMBERSHIP PROGRESS REPORT

District 201V5

Results as of: 5/31/2020

GMT:

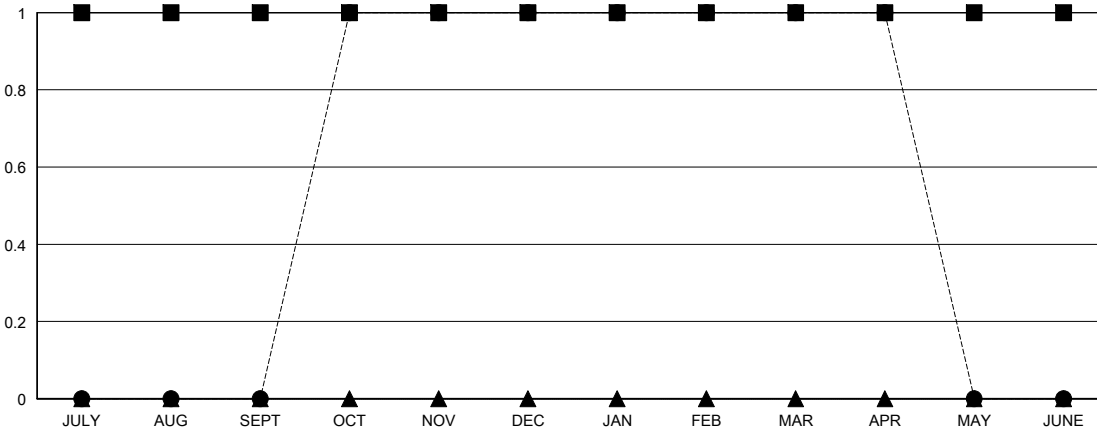
LOCATION AUSTRALIA

GMT CA

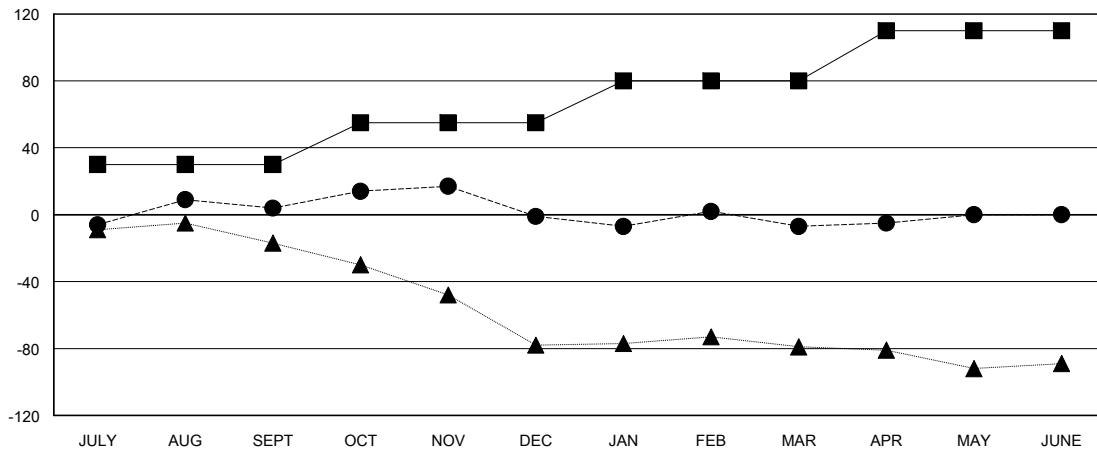
Clubs			
RESULTS FOR 2019-2020			
QUARTER	NEW CLUB GOAL	NEW CLUBS	DROPPED CLUBS
JULY/AUG/SEPT	1	0	0
OCT/NOV/DEC	0	1	0
JAN/FEB/MAR	0	0	1
APR/MAY/JUNE	0	0	0

Members			
RESULTS FOR 2019-2020			
QUARTER	MEMBER GROWTH NET GOAL	MEMBER GROWTH ACTUAL	DROPPED MEMBERS ACTUAL (including transfers)
JULY/AUG/SEPT	30	36	29
OCT/NOV/DEC	25	66	66
JAN/FEB/MAR	25	32	33
APR/MAY/JUNE	30	9	7

GOALS AND ACTUAL NEW CLUBS CUMULATIVE



GOALS AND ACTUAL MEMBERS CUMULATIVE



DROPPED CLUBS: 1	
<b>DROPPED MEMBERS</b>	
DECEASED	18
CLUB CANCELLED	0
OTHER	117
<b>TOTAL</b>	<b>135</b>

38 CLUBS OF 66 ADDED 1 OR MORE NEW MEMBERS

GENDER DISTRIBUTION	
MALE	812 (64.91%)
FEMALE	439 (35.09%)

[CLICK HERE FOR CUMULATIVE MEMBERSHIP DATA](#)

TOTAL FAMILY UNIT MEMBERS	157
FAMILY MEMBERS PAYING HALF DUES	81